



OCO – Appendix One

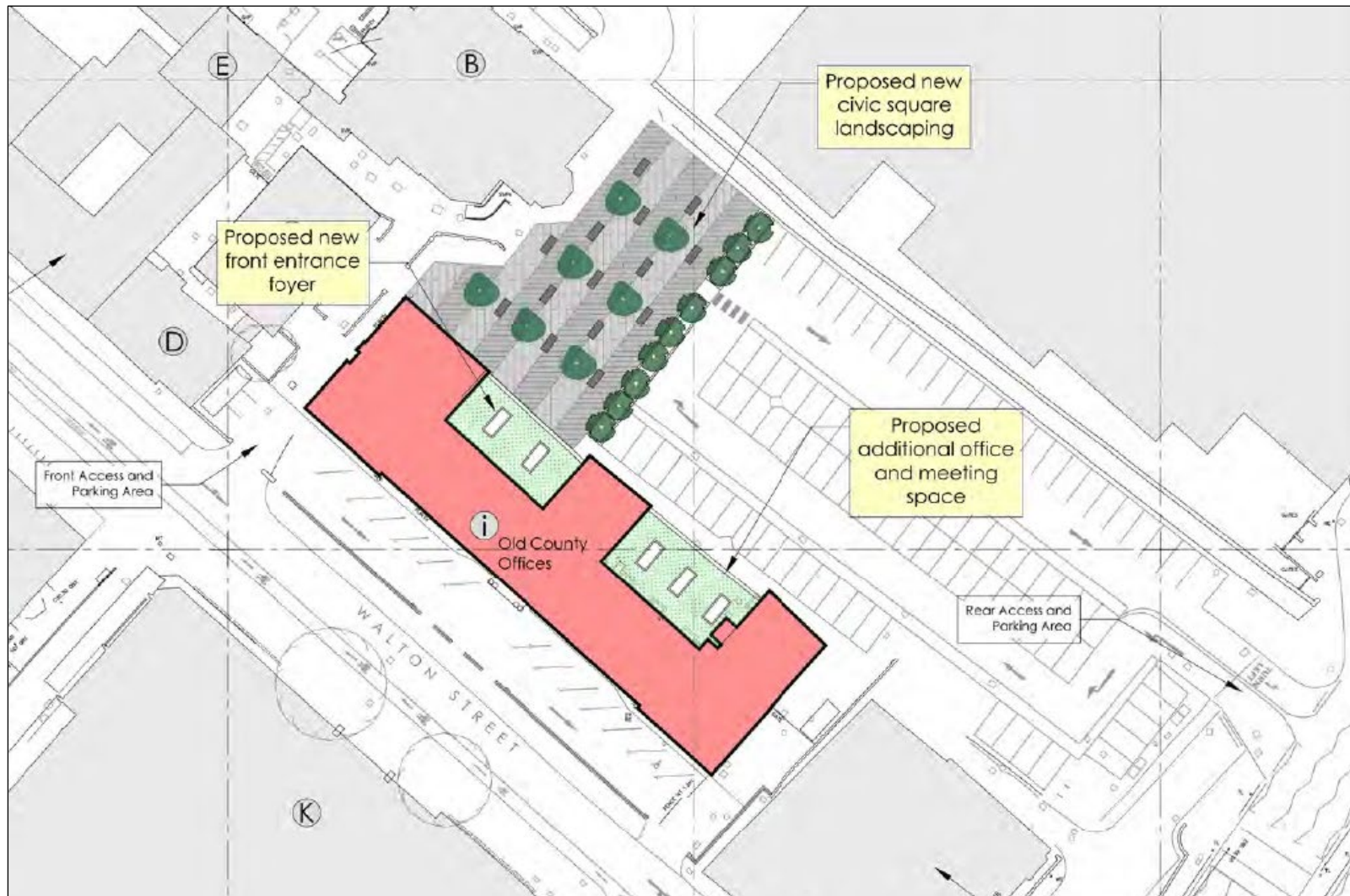
Office refurbishment drawings



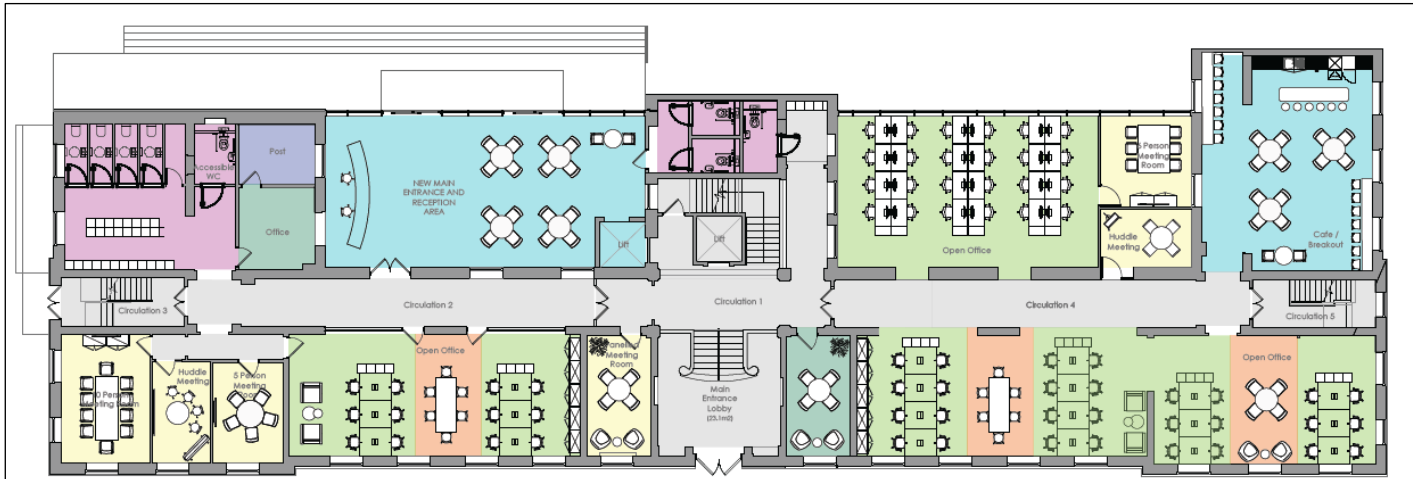
OCO – Office Option (concept images)



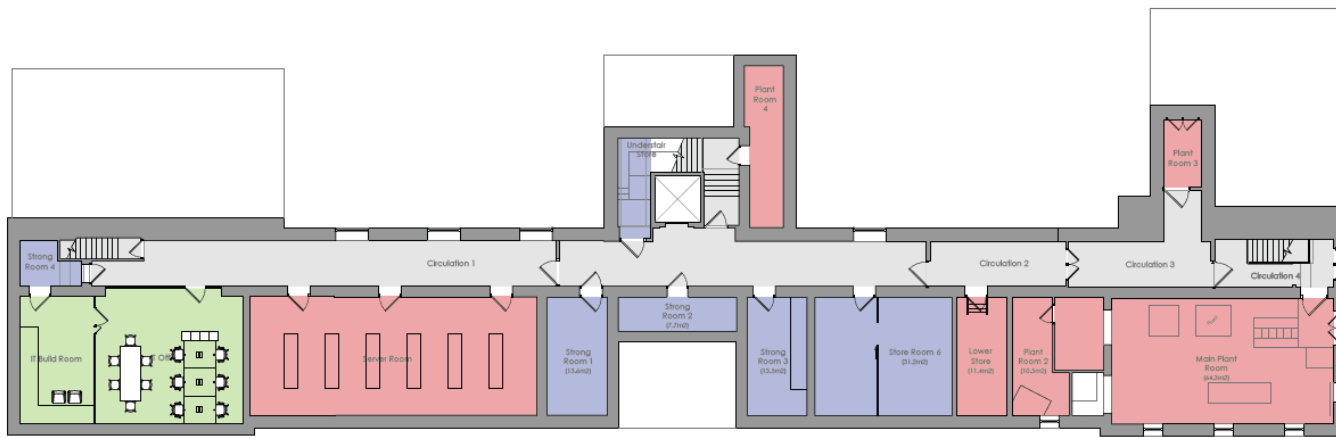
OCO – Office Option (links to public realm)



OCO – Office Option (floorplans)



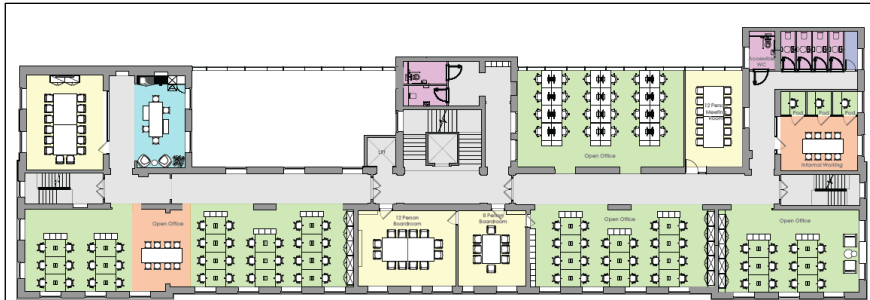
Proposed Ground Floor Plan



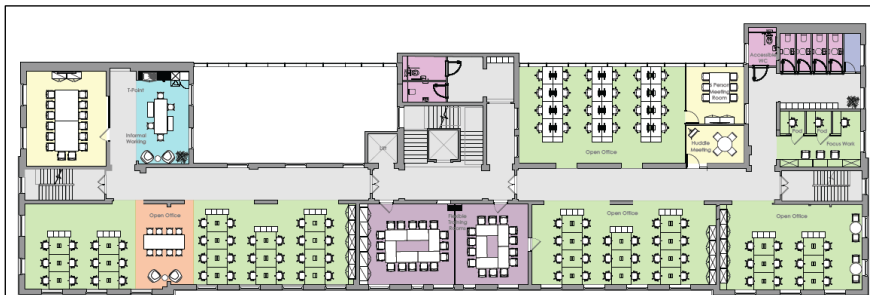
Proposed Basement Plan



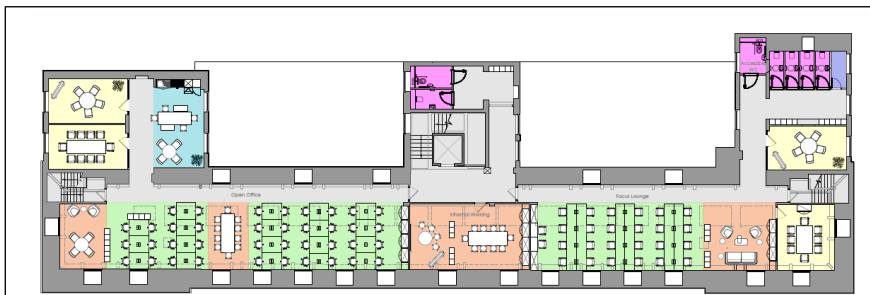
OCO – Office Option (floorplans)



Proposed First Floor Plan



Proposed Second Floor Plan



Proposed Loft Plan



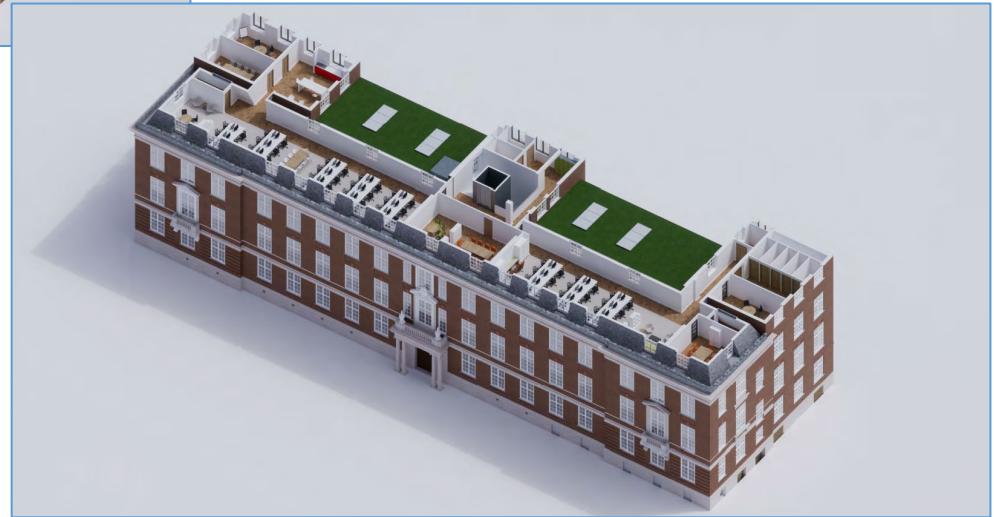
OCO – Office Option (elevation drawings)



Axonometric plans – Ground & First Floor views



Axonometric plans – Second & Third Floor views



Office conversion space options - headcounts

Bronze

| Overall Totals | Quantity |
|-----------------------------|----------|
| Desks | 212 |
| Informal Work Spaces* | 83 |
| Meeting Rooms Totals | |
| 14 Person | 2 |
| 12 Person | 1 |
| 10 Person | 2 |
| 8 Person | 3 |
| 6 Person | 0 |
| 5 Person | 3 |
| 4 Person | 1 |
| 4 Person Huddle Room | 1 |
| 4 Person Soft Room | 1 |
| Multifaith Room | 1 |
| 30 Person Flexible Training | 1 |

* excluding breakout areas

Silver

| Overall Totals | Quantity |
|-----------------------------|----------|
| Desks | 244 |
| Informal Work Spaces* | 89 |
| Meeting Rooms Totals | |
| 14 Person | 2 |
| 12 Person | 1 |
| 10 Person | 2 |
| 8 Person | 2 |
| 6 Person | 0 |
| 5 Person | 3 |
| 4 Person | 2 |
| 4 Person Huddle Room | 1 |
| 4 Person Soft Room | 0 |
| Multifaith Room | 0 |
| 30 Person Flexible Training | 1 |

* excluding breakout areas

Gold

| Overall Totals | Quantity |
|-----------------------------|----------|
| Desks | 248 |
| Informal Work Spaces* | 89 |
| Meeting Rooms Totals | |
| 14 Person | 2 |
| 12 Person | 1 |
| 10 Person | 2 |
| 8 Person | 2 |
| 6 Person | 0 |
| 5 Person | 3 |
| 4 Person | 2 |
| 4 Person Huddle Room | 1 |
| 4 Person Soft Room | 0 |
| Multifaith Room | 0 |
| 30 Person Flexible Training | 1 |

* excluding breakout areas

Platinum

| Overall Totals | Quantity |
|-----------------------------|----------|
| Desks | 316 |
| Informal Work Spaces* | 89 |
| Meeting Rooms Totals | |
| 14 Person | 2 |
| 12 Person | 2 |
| 10 Person | 2 |
| 8 Person | 2 |
| 6 Person | 2 |
| 5 Person | 3 |
| 4 Person | 2 |
| 4 Person Huddle Room | 3 |
| 4 Person Soft Room | 0 |
| Multifaith Room | 0 |
| 30 Person Flexible Training | 1 |

* excluding breakout areas

The tables above show the total space available in the alternative design options. The Platinum option is the only option that could offer adequate space to accommodate current staff levels in Aylesbury.